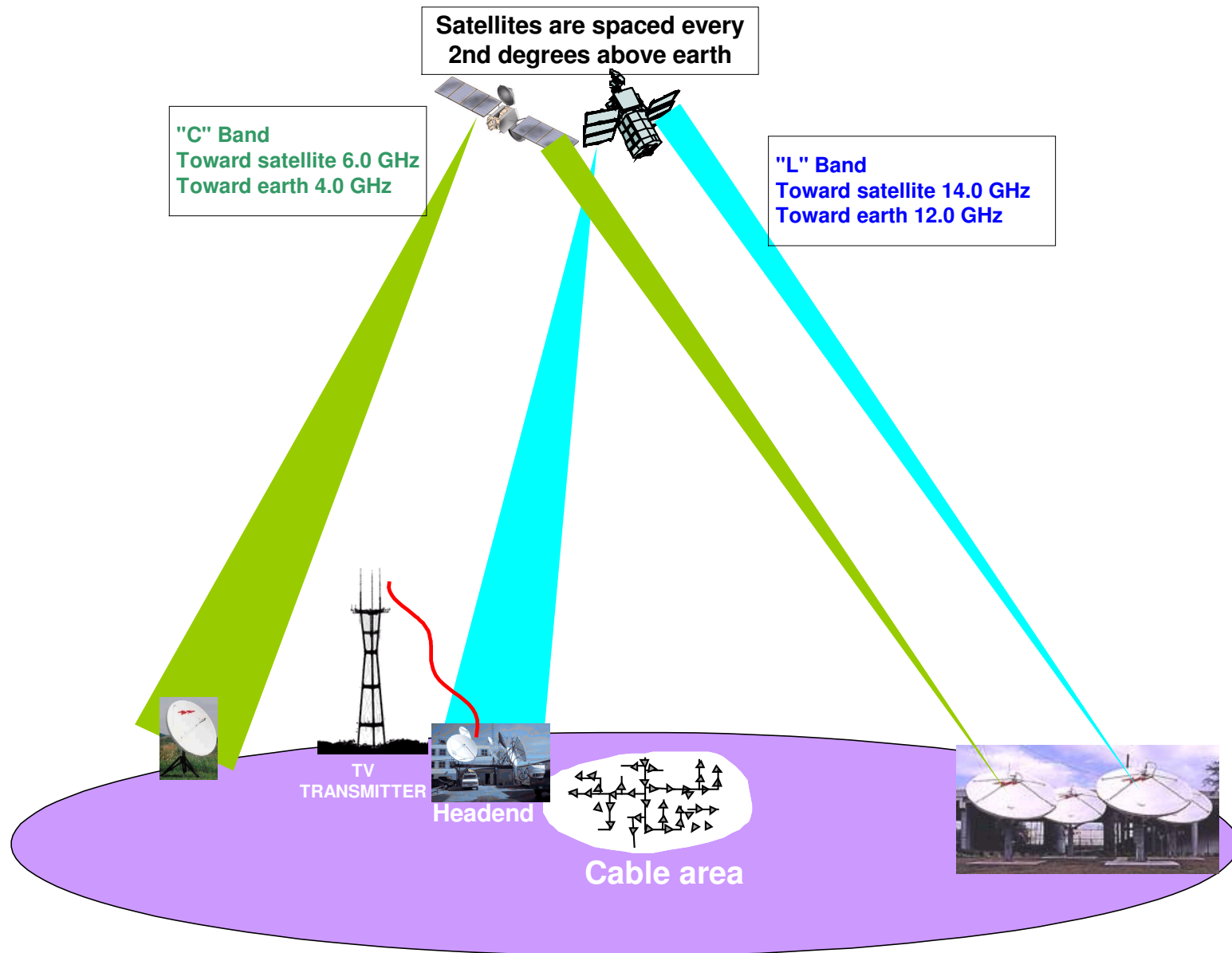
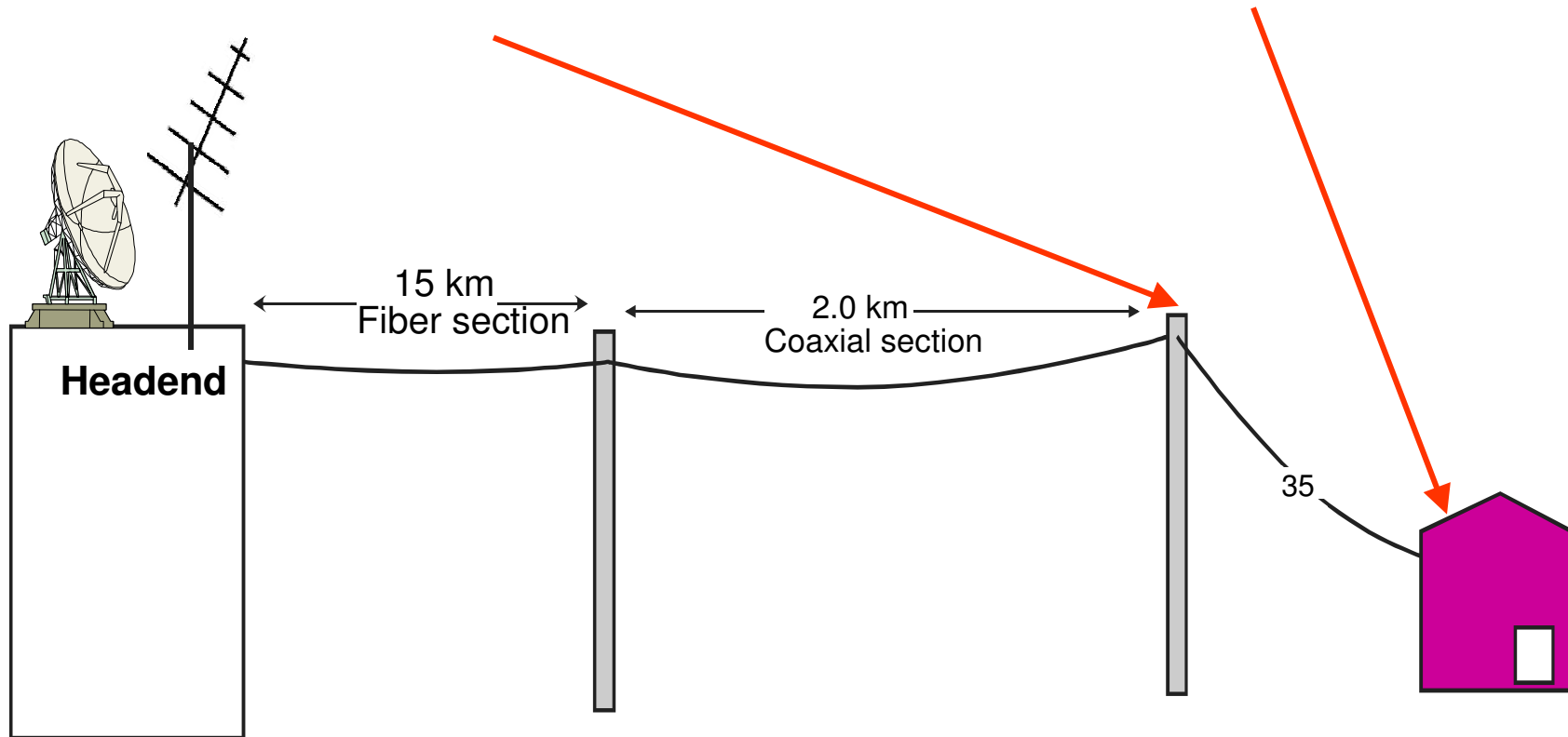


Broadband System - M



Customer's Installation

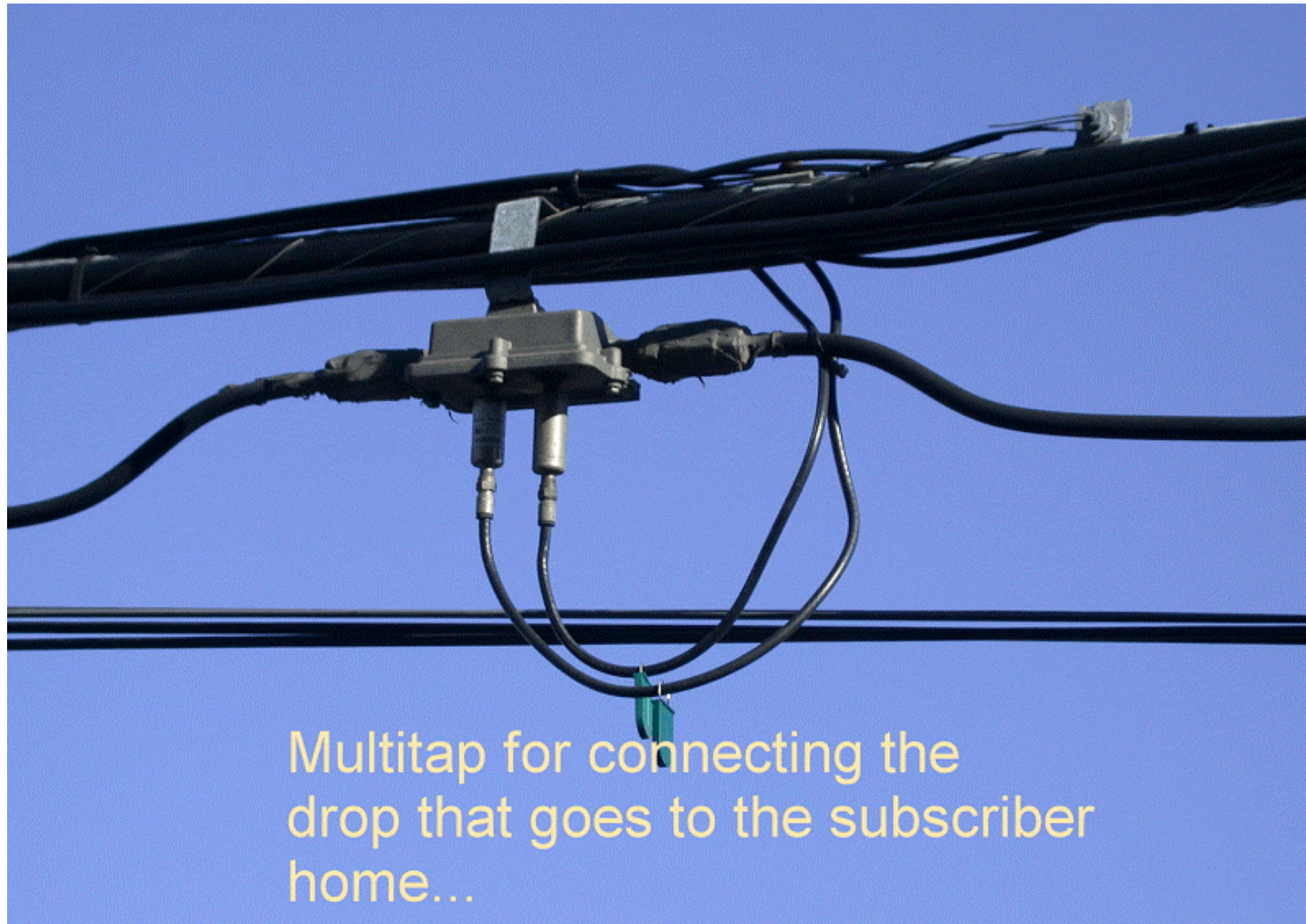
This section will covers equipments required between these two points.



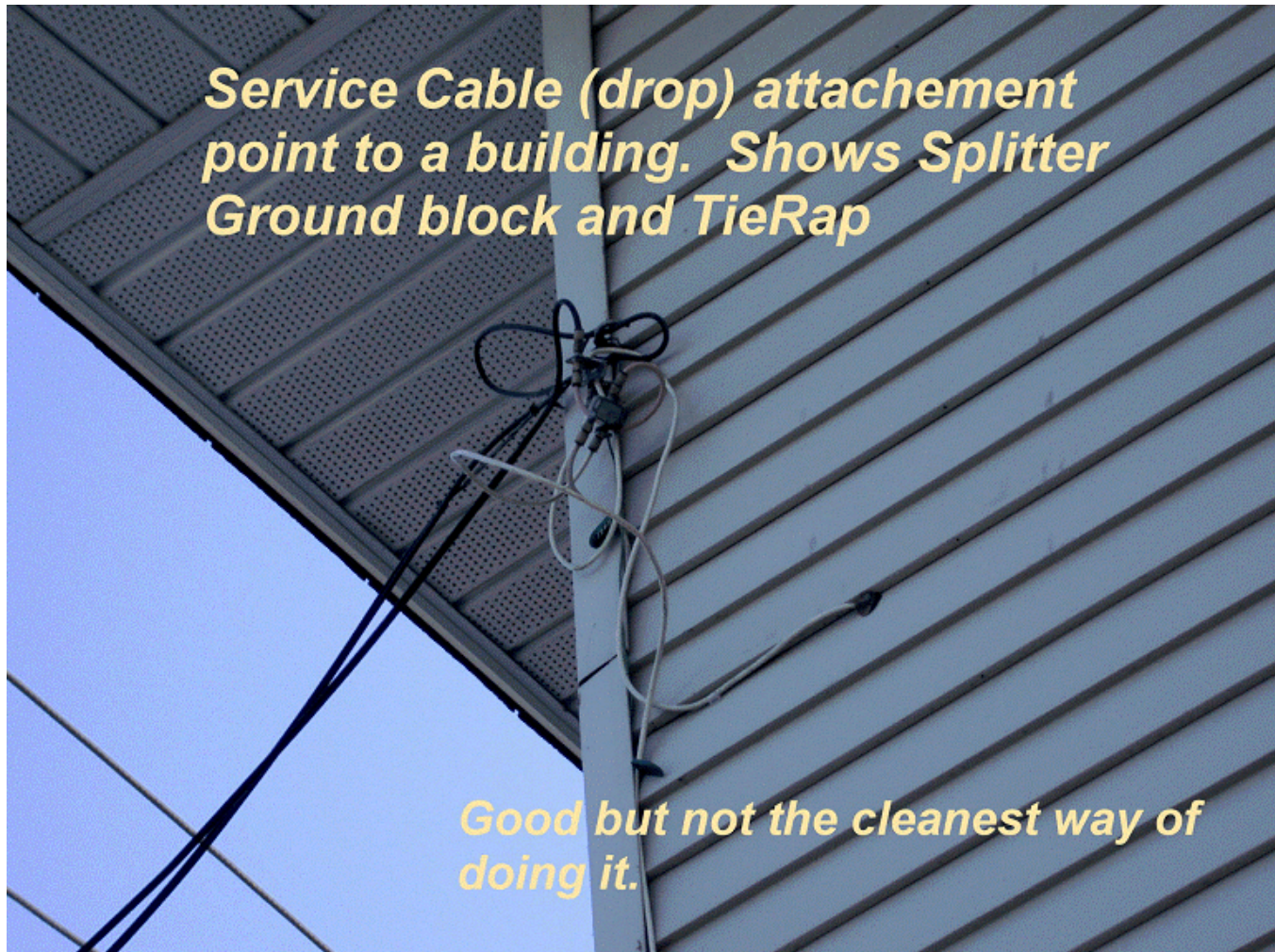
Customer's Installation



Customer's Installation



Customer's Installation



Customer's Installation



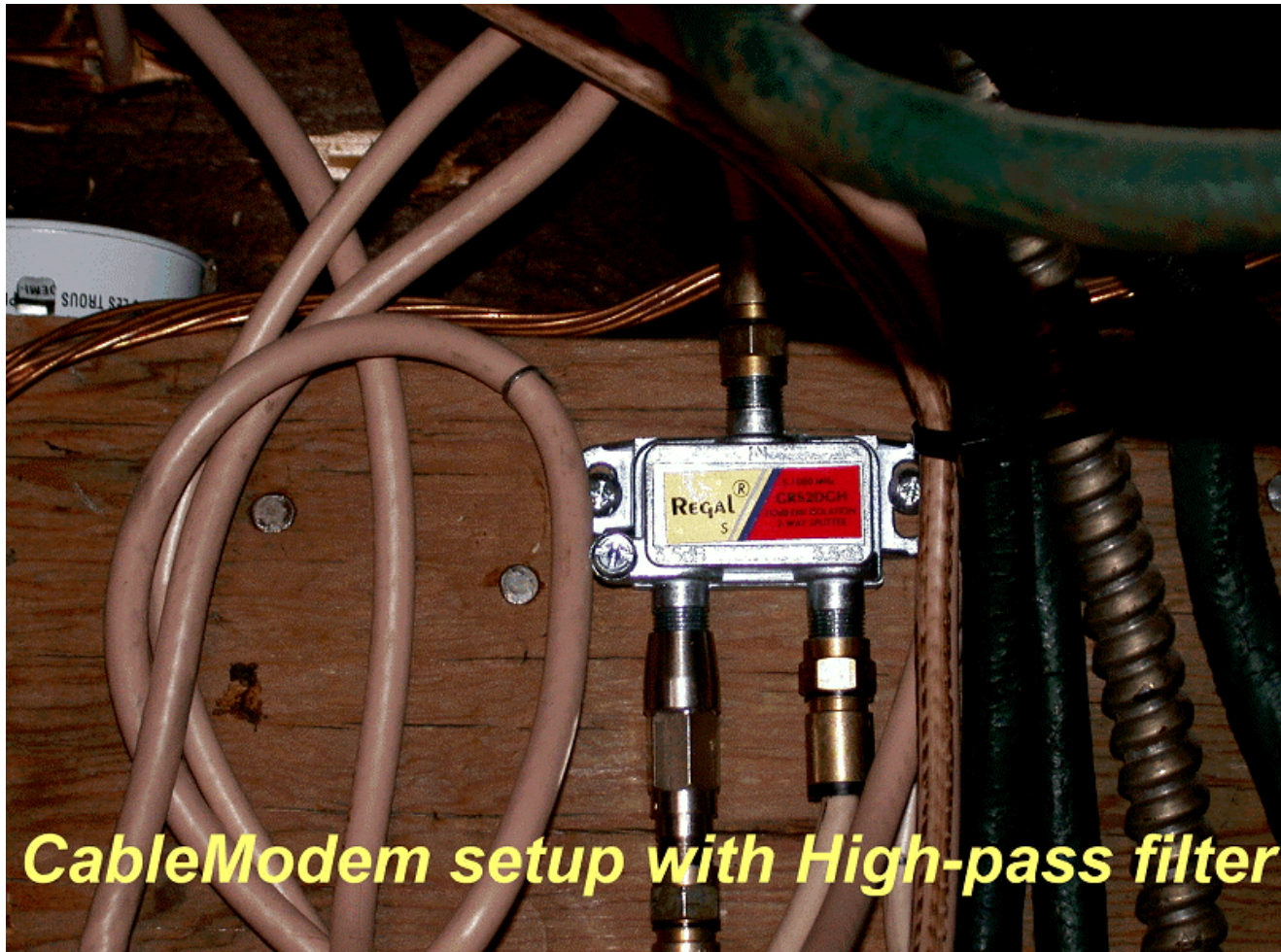
Customer's Installation



Customer's Installation

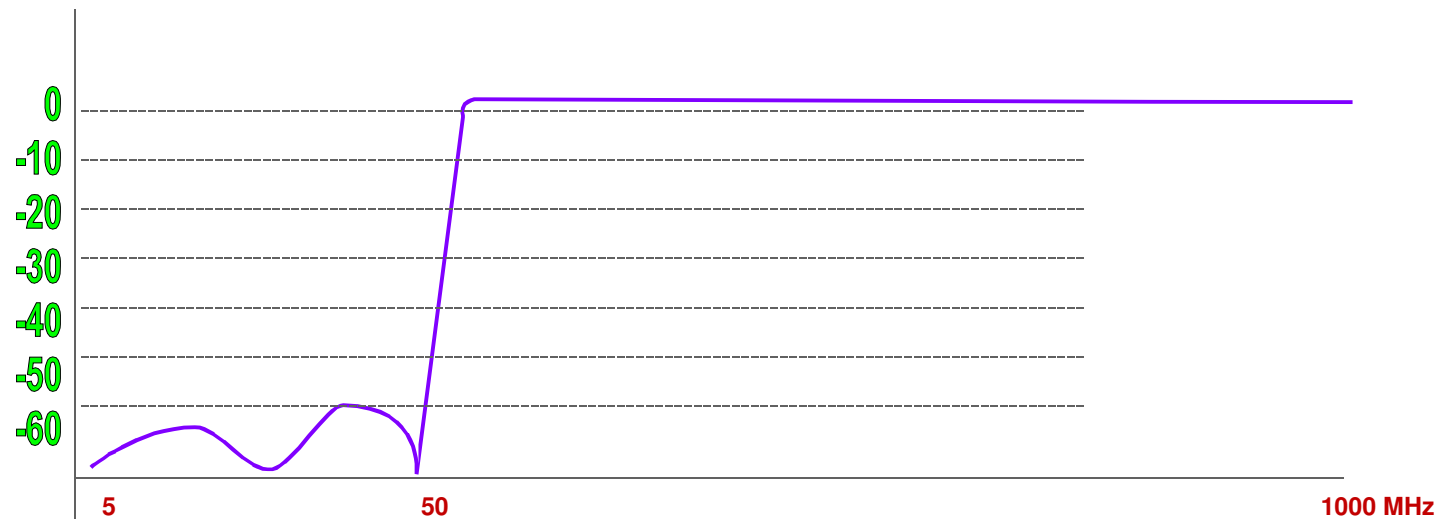


Customer's Installation



Customer's Installation

Response of a High Pass Filter for none Cablemodem installation.



This High Pass Filter is often installed at all the customer premise, where no Cablemodem service is required. This help keep the return system free of Ingress, coming from customer.

Customer's Installation



Customer's Installation Material.



Customer's Installation Material.



Customer's Installation Material.

Technical specifications of the two drop cable used in a Broadband System;

<u>RG-59</u>		<u>RG-6</u>		<u>RG-7</u>		<u>RG-11</u>	
MHz	dB100'	MHz	dB100'	MHz	dB100'	MHz	dB100'
5	0.86	5	0.58	5	0.47	5	0.38
50	1.95	50	1.53	50	1.19	50	0.92
450	5.40	450	4.40	450	3.46	450	2.75
550	5.95	550	4.90	550	3.85	550	3.04
750	6.97	750	5.65	750	4.57	750	3.65
870	7.53	870	6.11	870	4.94	870	3.99

Above specifications are at 68 Degree F.

Customer's Installation Material.



Customer's Installation Material.



The end of this presentation.